

AWARD in Informal Tourney "Chess Poetry" 2007 (h # 2)

29 entries were received for judging from 27 authors from 8 countries.

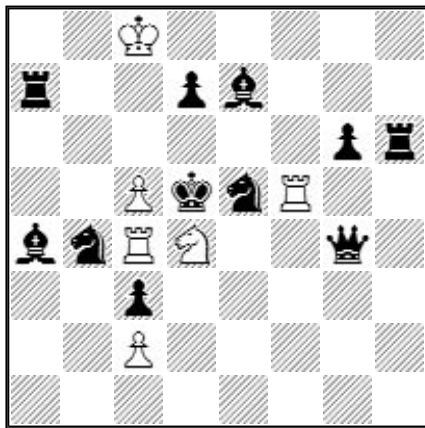
The total level of the problems is not high. Frankly weak, simple and originalless (with well-known schemes) problems were excluded from awarding.

I consider that problems participating in annual tourney of magazine by name "Chess Poetry" must be carefully checked on a part of its external form (construction), naturally, not in the prejudice of contents.

So, from the best impetuses, the judge has afforded to offer improved versions of some awarded works. Will agree or will not agree the authors with offered versions - it will not affect to ranking.

No 2464

1Pr V.Abrosimov,
E.Zarubin (Russia)



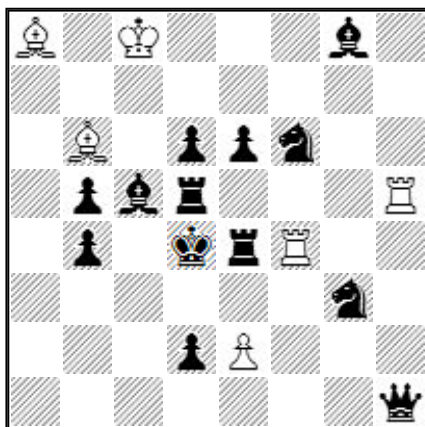
H # 2 see text (6 + 11)

- | | | |
|-----------------|-------------|----------------|
| a) diagram | 1. Bc6 Sf3 | 2. Qxc4 Rxe5 # |
| b) Sb4 --> c6 | 1. gf5 Sxf5 | 2. Re6 Se3 # |
| c) Pd7 --> c5 | 1. cd4 Rc5+ | 2. Ke4 Rxe5 # |
| d) Qg4 <--> Se5 | 1. Kxc4 Sb5 | 2. Qd4 Sa3 # |
| e) Pc5 --> e6 | 1. Qxd4 Rf4 | 2. de6 Rfxd4 # |
| f) Pc5 --> b5 | 1. Qxf5 Sb3 | 2. Qe6 Rd4 # |

The most ambitious problem of the tourney with two pairs of triple cyclic Zilahi (ab-bc-ca and ac-cb-ba) with passive captures of white pieces on squares s4, f5 and d4 by different black pieces in pairs. In spite of some flaws (tactical spottiness of capturing motives, ununified twins, including the second order ones), six-phase problem with model mates and without move repetition, I belief, is a serious achievement and deserves the high place.

No2462

2 Pr N. Kolesnik,
R. Zalokotski (Ukraine)

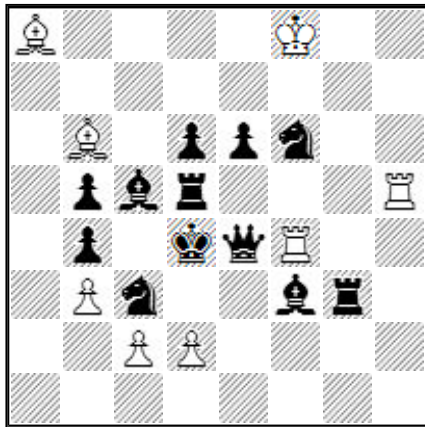


H # 2 b) Pe2 --> b3 (7 + 12)

- a) 1. Rxf4 Bxc5+ 2. Ke4 d3 #
- b) 1. Bxb6 Rxe4+ 2. Kc5 d4 #

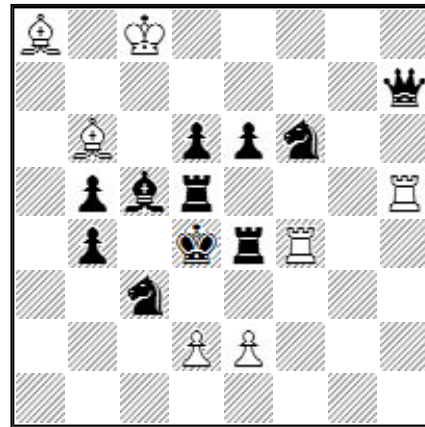
Complex strategical problem with changing pin-lines, change functions of white and black pieces, "follow-my-leader" effect in the black's play and mating white pawn's double-step. In spite of the fact that idea can be realized in multi-solution form with minimum adding of the white material (see diagram "A", C+), I consider the twin form is quite acceptable because the static white pawn is used in both phases. However there is a possibility to spare one black unit (see diagram "B", C+).

A (version)



H # 2 2.1.1.1. (8 + 12)

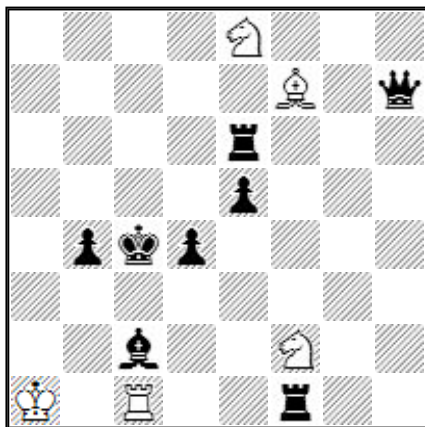
B (version)



H # 2 b) Pe2 --> b3 (7 + 11)

No2380

1 HM N. Kolesnik,
V. Vinokurov (Russia)



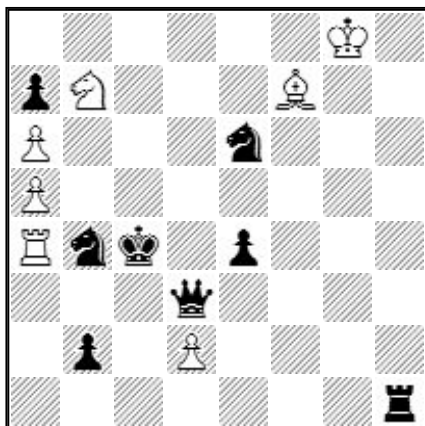
H # 2 2.1.1.1. (5 + 8)

- 1) 1. Kc3 Sd6 (Sf6?) 2. Rg6 Sde4 #
- 2) 1. Kd5 Sg4 (Se4?) 2. Bf5 Sgf6 #

Uniform strategy with reciprocal change function between thematic pieces, antidual choice of the W1 and model pin-mates. For complete harmony, I offer to dispose Rf1 on h6 in initial position. Then both black pieces on B2 will play on g6, that will add the play a special unity (C+).

No 2305

2 HM A. Stepochnik (Russia)



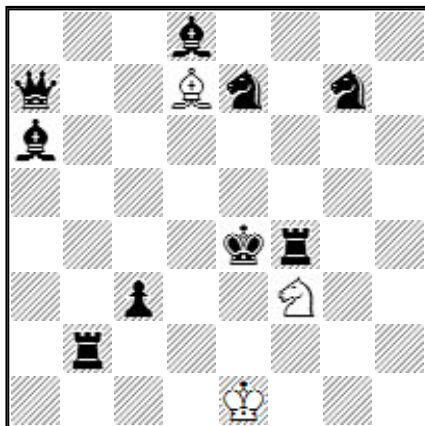
H # 2 b) Sb7 --> b8 (7 + 8)

- a) 1. Kb3 ?? 2. Sc2 Sc5 #,
1. Kd4 Sd8 2. Sc5 Sc6 #
- b) 1. Kd4 ?? 2. Sc5 Sc6 #,
1. Kb3 Sd7 2. Sc2 Sc5 #

Interesting combination with reciprocal changing of false manoeuvre (not sounding because of the white's tempo-move lack) and actual play in phases. Two technical white pawns - compelled charge per "flavor" of the problem. Model pin-mates.

No 2379

3 HM M. Gershinski,
V. Chepizhni (Ukraine & Russia)



H # 2 b), c) Sd7, Rd7 (3+ 9)

a) 1. c2 Kd2 2. Sef5 Bc6 #

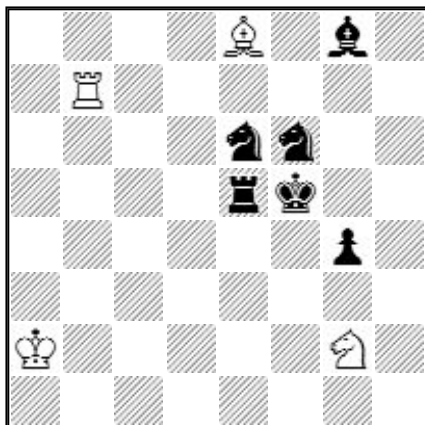
b) 1. Rb5 Ke2 2. Sgf5 Sf6 #

c) 1. Rb6 Kf2 2. Rf5 Rd4 #

Not quite matched (tactically) but rather interesting play, finishing with model mates. Good construction and twins form.

No 2298

Commendations (as equal)
S. Parzuch (Poland)



H # 2 b) Pg4 --> g5 (4 + 6)

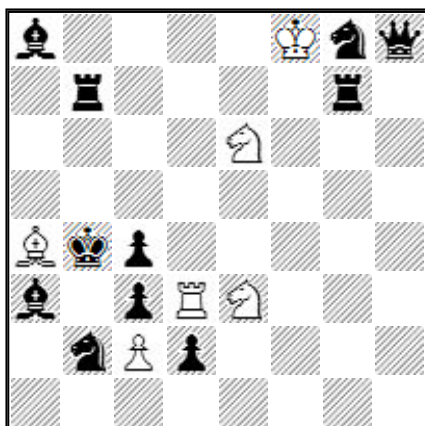
a) 1. Sd5 Rb6 2. Sg5 Bg6 #

b) 1. Rd5 Re7 2. Sf4 Se3 #

Comparatively simple but remembering setting in economical position without technical units.

No 2306

A. Schonholzer (Switzerland)



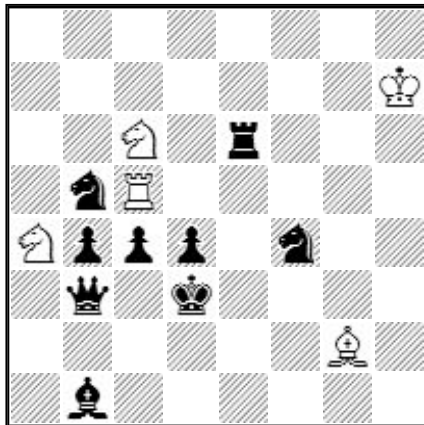
H # 2 2.1.1.1. (6 + 11)

1) 1. Rbe7 Sxc4 (Rxc3?) 2. Kxc4 Rd4 #

2) 1. Rge7 Rxc3 (Sxc4?) 2. Kxc3 Sd5 #

Active Zilahi with antidual sacrifices. It is possible to realize similar idea with model mates in more economical position, but without antiduals (see diagram "C", C+).

C (version)



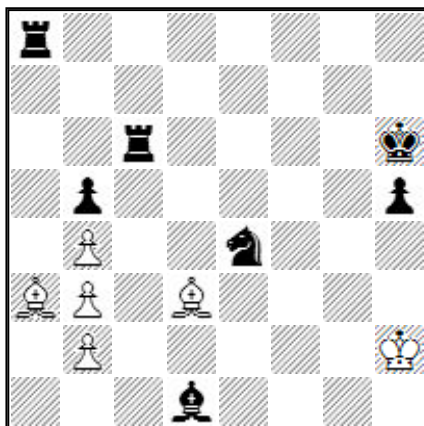
H # 2 b) Sa4 --> d1 (5 + 9)

a) 1. Rg6 Rxc4 2. Kxc4 Se5 #

b) 1. Sg6 Sxd4 2. Kxd4 Rd5 #

No 2302

M. Gershinski (Ukraine)



H # 2 see text (6 + 7)

a) diagram 1. Ra5 ba5 2. Sg5 Bf8 #

b) Kh6 --> c1 1. Ra4 ba4 2. Sd2 b3 #

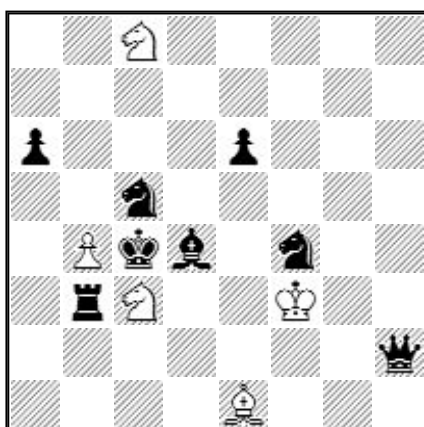
c) Kh6 --> e1 1. Rc5 bc5 2. Sf2 Bb4 #

d) Se4 --> f5 1. Rc3 bc3 2. Sg7 Bc1 #

In spite of radical twins, four-phase problem with two pairs of echo-mates and quite uniform, although rather simple, play deserves a commendation.

No 2459

A. Pankratiev (Russia)



H # 2 2.1.1.1. (5 + 8)

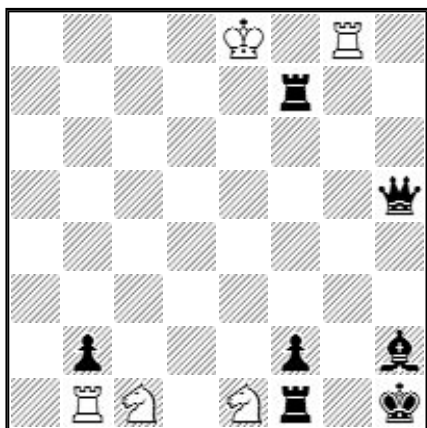
1) 1. Scd3 Sd5 (Sb5?) 2. ed Sd6 #

2) 1. Sfd3 Sb5 (Sd5?) 2. ab Sb6 #

Antidual sacrifice of indirect-unpinned (with B1) WS. The idea is not new but is a good performed. Pity that one mate is not model. Apropos, it is enough one BP on c6 instead of two black pawns, forming Meredith position (C+).

No 2457

A. Ugnivenko,
R. Zalokotski (Ukraine)



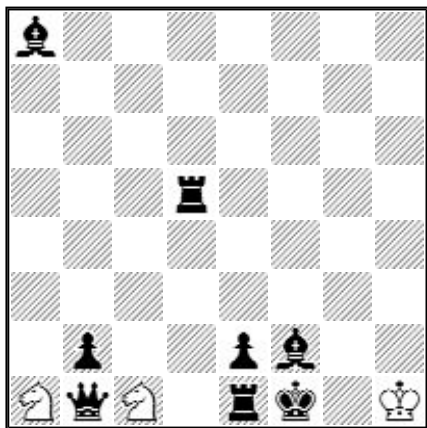
H # 2 2.1.1.1. (5 + 7)

1) 1. bc=B! S**ed**3 2. Bcf4 S**ex**f2 #

2) 1. fe=S! S**cd**3 2. Sf3 S**cf**2 #

Passive Zilahi with minor black promotions, interferences and play of WSs on the same route. Use of the pins adds to the problem an additional "weight" but, on my glance, not justified (see diagram "D", C+).

D (version)



H # 2 2.1.1.1. (3 + 8)

1) 1. ba=B S**cb**3 2. Bad4 S**cd**2 #

2) 1. bc=S S**ab**3 2. Sd3 S**ad**2 #

Now both mates are without capture of the black thematic pawn, and one unit less.

Judge Vitaly Medintsev,
Krasnodar, 2 March 2008