

Memorial Tourney "V. Kolpakov - 50"
(help-mate problems), 2006

90 entries (54 H#2 and 36 H#3) were received for judging from 42 autors from Argentina, Germany, Israel, Italy, Latvia, Russia, Switzerland, Ukraine.



29. 11. 1955 - 02. 03. 2001

Following problems were excluded from the competition:

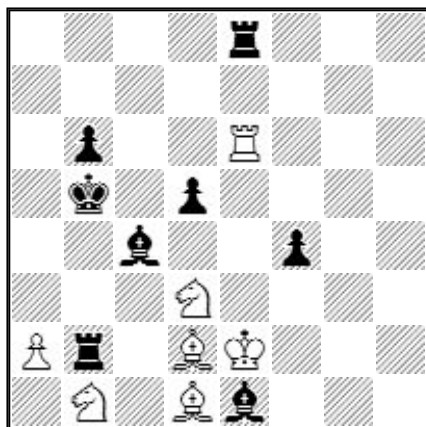
- **cooks:** A. Zhuk (H#2, Kh5-Kh1; H#3, Ke7-Kf4), V. Ryabtsev (H#2, Kb1-Kc5; H#2, Kc1-Kd5), G. Markovski (H#2, Kh7-Ke4), V. Lukhyanov (H#3, Kc8-Kb5; H#3, Kh8-Kb5; H#3, Kc8-Kb5), A. Tsaplin (H#2, Kh1-Kh8; H#2, Kc1-Ka5; H#3, Kh1-Kf5), V. Chernih (H#2, Kc5-Ke6; H#3, Kd2-Kd5), V. Kondratiev (H#3, Kc5-Kf4).
- **non thematic:** W. Diaz & R. Larin (H#3, Kd3-Kb4; H#3, Kc1-Kb3), A. Cuppini (H#2, Kpd2-Kpe5), S. Trommler (H#3, Kpa5-Kpg7), M. Witztum & J. Haymann (H#2, Kph1 – Kpd1; H#2, Kpa2-Kpg3).
- **illegal position:** E. Vaulin (H#2, Kh1-Kg6).

Section H # 2

Theme: Black on B1 unpins a white piece which one actively sacrifices on W1 without check or capture.

1 Pr V. Nefedov (Russia)

No1



H # 2 2.1.1.1. (7 + 8)

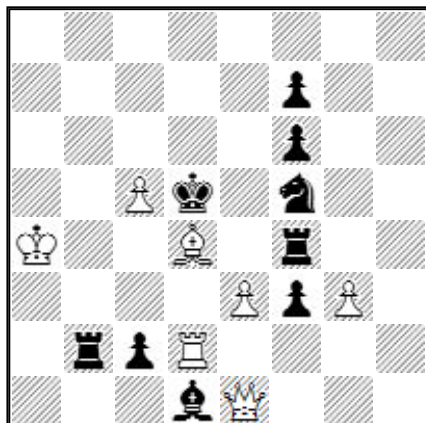
1) 1. Rxb1! Ba5! 2. ba5 a4 #

2) 1. Bxa2! Kc5! 2. bc5 Sa3 #

Harmonious idea in multi-solution form with exact B1, passive Zilahi and model mates.

2 Pr V. Chepizhni (Russia)

No 2



H # 2 2.1.1.1. (7 + 9)

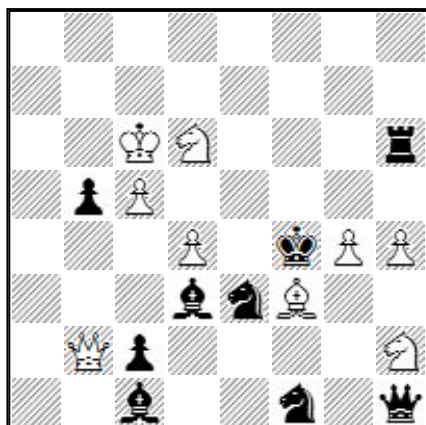
1) 1. Ke4 Be5 2. Kxe5+ ef4 #

2) 1. Kc4 Bc3 2. Kxc3+ Rd4 #

In spite of a certain spottiness of play in phases, the problem makes the bright impression by checks to the white king on B2 and battery mates.

3 Pr E. Navon, M. Witztum (Israel)

No 3



H # 2 2.1.1.1. (9 + 9)

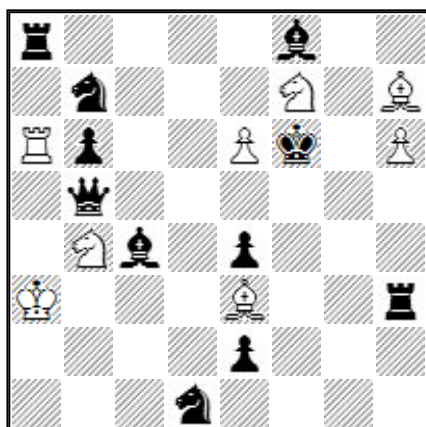
1) 1. Bg6 (Rh8 - ?) Sc4 2. bc4 Qb8 #

2) 1. Sg2 (Qg1 - ?) Bd1 2. cd1=R Qf2 #

Quite complex and tactically saturated idea with antidual unpinning, sacrificing white piece's leaving the perspective mate-line, line-opening and sweeping play of the white queen.

1 HM I. Antipin (Russia)

No 4



H # 2 Ra6 <--> Pe2 (8 + 11)

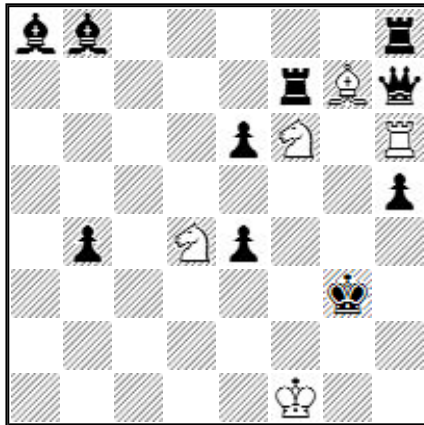
a) 1. Bd3! (Sc5?) Bc5! 2. bc5 Sd5 #

b) 1. Sc5! (Bd3?) Sd3! 2. ed3 Bg5 #

Interesting problem with antidual indirect unpinning, line-opening and active "Zilahi". It is pity that the model mate only in a).

2 HM V. Vinokurov (Russia)

No 5



a) 1. Rc7 Sg4! 2. hg4 Be5 #

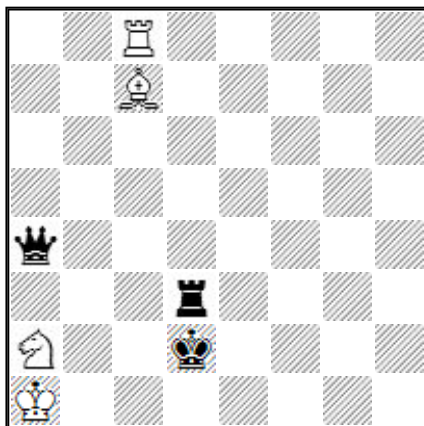
b) 1. Rb7 Sd5! 2. ed5 Rc6 #

Tactically saturated and quite complex idea with direct unpinning, black interferences and white line-opening. Rather radical twin.

H # 2 b) Kg3 --> c5 (5 + 10)

3 HM V. Chepizhni (Russia)

No 6



a) 1. Qd1+ Sc1 2. Kxc1 Bf4 #

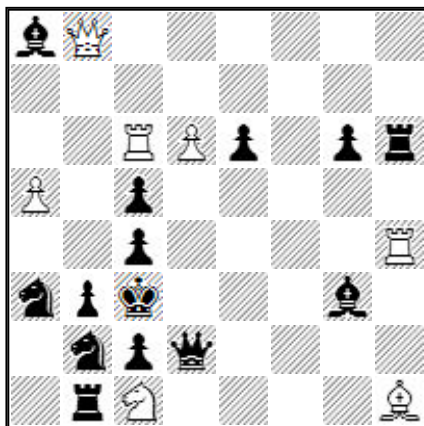
b) 1. Qd4+ Sc3 2. Kxc3 Ba5 #

Light and harmonious half-miniature half-aristocrat with orthogonal-diagonal checks to the white king and model battery mates.

H # 2 b) + BPb3 (4+ 3)

Com M.
Witztum, J.Haymann (Israel)

No 7



1) 1. Bh2 Rd4 2. cd4 Qxb3 #

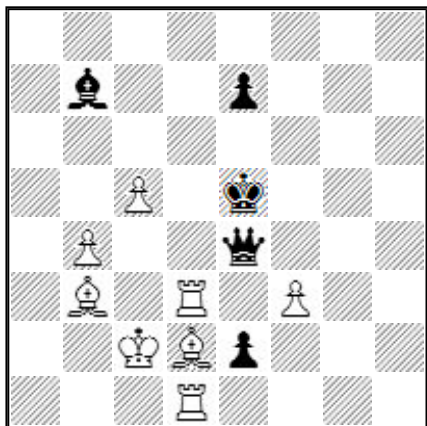
2) 1. Be1 Sd3 2. cd3 Qb4 #

Interesting play with indirect unpinning of white pieces and pin-mates. Heavy construction and two technical white pawns have not allowed to set the problem higher.

H # 2 2.1.1.1. (7 + 14)

Com E. Markov (Russia)

No 8



a) 1. Qe3 Rd4! 2. Kxd4 Bc3 #

b) 1. Qc6 Rd6! 2. Kxd6 Bf4 #

Unpinning with distant blocking and battery mates.

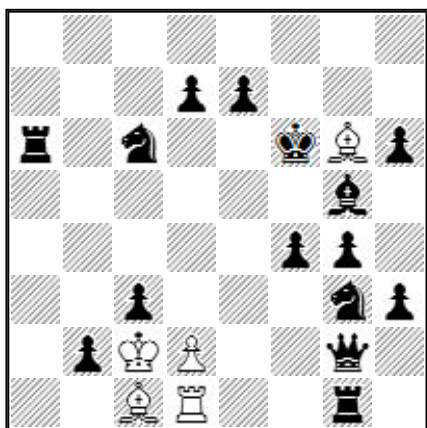
H # 2 b) Pc5 --> c3 (8 + 5)

Section H # 3

Theme: Strategic problem with mates by pawn(s).

1 Pr V. Nefedov (Russia)

No 1



a) 1. Qf1! (Qh1?) d4 2. Ke6 Bxf4 3. Bf6 d5 #

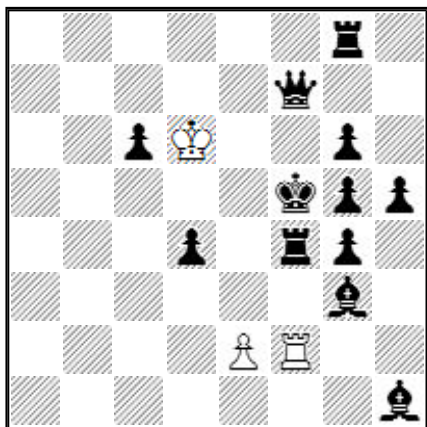
b) 1. Qh1! (Qf1?) de3 2. Bh4 Rd6+ 3. Kg5 ef4 #

Harmonious and tactically saturated idea with direct antidual unpinning of the white pawn, its frontal and diagonal steps in phases, white line-opening, "follow-my-leather" effect in black's play and model mates.

H # 3 b) Pe7 --> e3 (5 + 15)

2 - 3 Pr I. Antipin (Russia)

No 2



1) 1. Kf6 e4 2. Rf5+ Rf4 3. Rg7 e5 #

2) 1. c5 Rf3 2. Qf6+ Kd5 3. d3 e4 #

3) 1. Rf3+ Kc5 2. Kf4 Kxd4 3. Qf5 e3 #

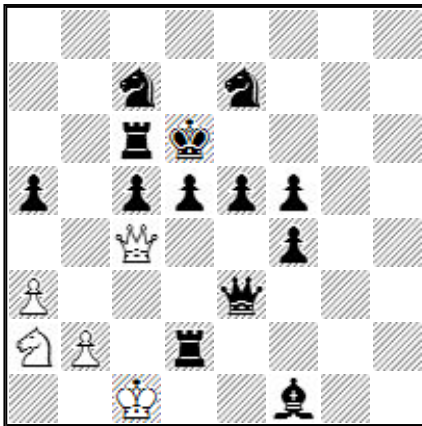
Triple-phased problem in multi-solution form with chameleon echo model pin-mates.

H # 3 3.1.1.1.1.1. (3 + 12)

2 - 3 Pr V. Chernous, A.
Kovrizhenko

No 3

U. Chervonyuk (Ukraine)



H # 3 2.1.1.1.1.1. (5 + 13)

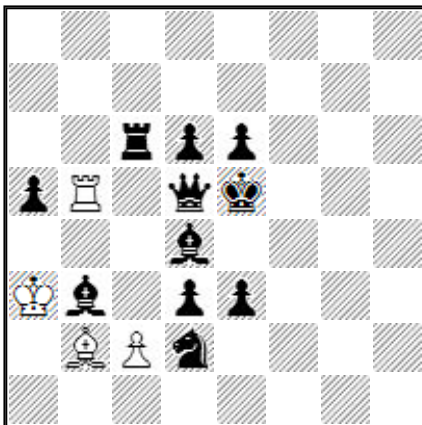
1) 1. Rb6 Qb3 2. Kc6 Sb4+ 3. Kb5 a4 #

2) 1. d4 Qc2 2. Kd5 Sc3+ 3. Kc4 b3 #

Quite harmonious problem with Umnov effect, unusual square vacation for the black king and difficult solutions with unexpected model echo-mates. Hope, authors will forgive the judge some changes of initial position.

4 - 5 Pr E. Fomichev (Russia)

No 4



H # 3 2.1.1.1.1.1. (4 + 11)

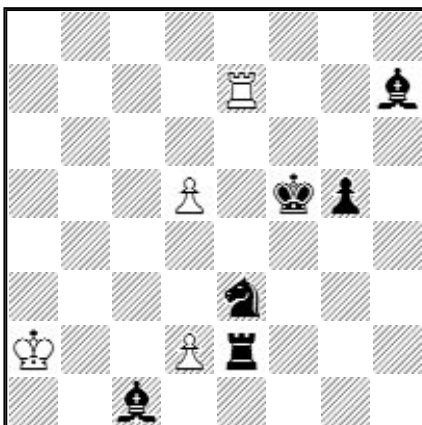
1) 1. Se4 Rxd5+ 2. Kxd5 Kxb3 3. Bc5 c4 #

2) 1. Bc4 Bxd4+ 2. Kxd4 Kb2 3. Qe4 c3 #

Rather homogeneous play with blocking, interferences, active sacrifices of the white pieces and model mates. A few unpleasantly capture on b3.

4 - 5 Pr V. Vinokurov (Russia)

No 5



H # 3 b) Kf5 --> f6 (4 + 6)

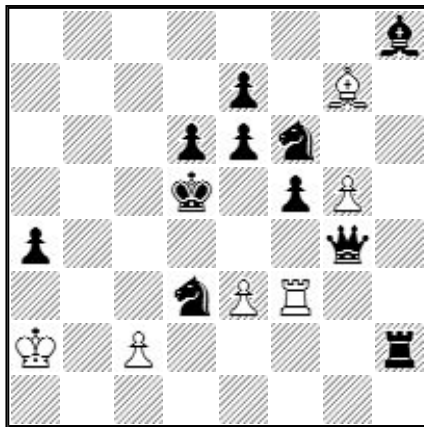
a) 1. Sg4 Re6 2. Re4! d3 3. Bf4 de4 #

b) 1. Sf5 d6 2. Re5! d4 3. Bg6 de5 #

Well-constructed problem with line-opening, blocking, direct unpinning of white pawn with perspective sacrifice of the black rook and chameleon echo model mates.

1 HM L. Makaronets,
S.Shifrin (Israel)

No 6



H # 3 b) Pc2 --> g2 (6+ 11)

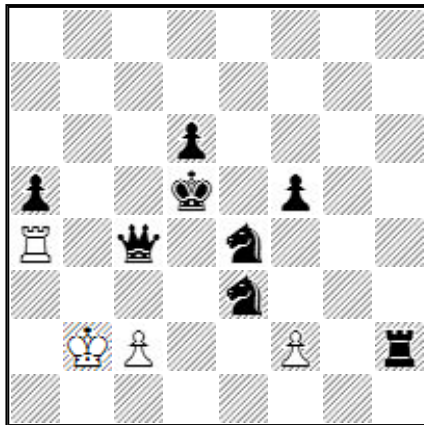
a) 1. Se4 Bb2 2. Bd4 c4+ 3. Ke5 ed4 #

b) 1. Ke4 Rf2 2. Sd5 Bd4 3. Qf3 gf3 #

Not quite uniform, but very complex problem with unbelievably difficult solutions.

2 - 3 HM I. Antipin (Russia)

No 7



H # 3 b) Pd6 --> f6 (4 + 8)

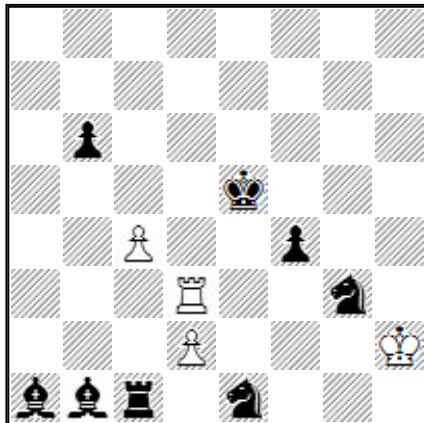
a) 1. Qc6 f3 2. Sc5 Re4 3. Sg2 c4 #

b) 1. Ke5 c3 2. Qe6 Rd4 3. Sd2 f4 #

Nice Meredith with white thematic half-pin play, line-opening, blocking and chameleon echo model mates.

2 - 3 HM L. Makaronets,
L. Lyubashevski (Israel)

No 8



H # 3 b) Ba1 --> d4 (4 + 8)

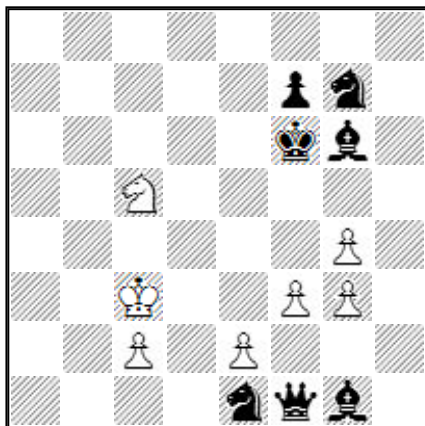
a) 1. Rc3 Rd6 2. Bf5 c5 3. Se4 d4 #

b) 1. Sc2 Kg2 2. Be3 Rd5+ 3. Ke4 d3 #

Tactically saturated Meredith, as the previous one, with similar finals.

4 - 5 HM U. Berezhnoi (Russia)

No 9



1) 1. Qh3 g5+ (A) 2. Kf5 f4 (B) 3. Qg4 e4 (C) #

2) 1. Qg2 f4 (B) 2. Qb7 e4 (C) 3. Qe7 g5 (A) #

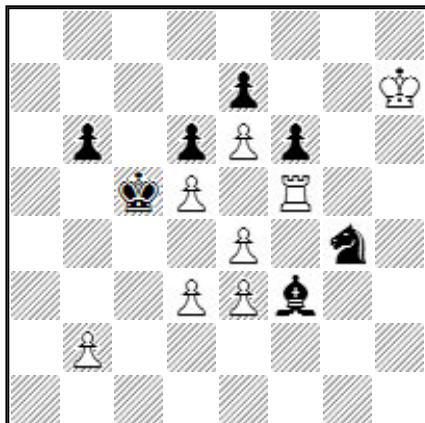
3) 1. Ke5 e4 (C) 2. Qa6 g5 (A) 3. Qd6 f4 (B) #

Triple-phased problem with white pawns moves cycle, blocking and model mates. The strategy, however, is simple and not quite enough original.

H # 3 3.1.1.1.1.1.1. (7 + 6)

4 - 5 HM A. Steepochkin (Russia)

No 10



a) 1. Bd1 Rf1 2. Ba4 Rb1 3. Bb5 b4 #

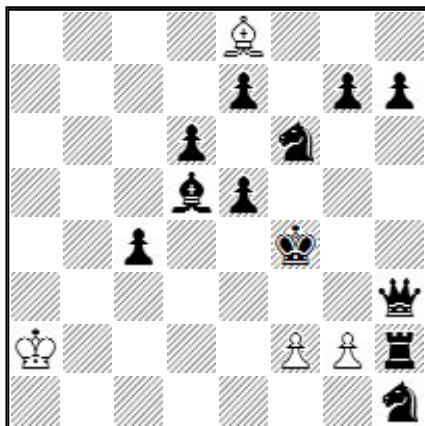
b) 1. Se5 Bh3 2. Sc6 Bf1 3. Sb4 d4 #

Not quite enough uniform, but remembering play, ending with model mates. It is pity that thematic white pawn b2 is idle in b).

H # 3 b) WBf5 (8 + 7)

Com G. Ibulaev (Russia)

No 11



1) 1. Kf5 f4(A) 2. Sf2 g4(B) + 3. Ke6 f5 #

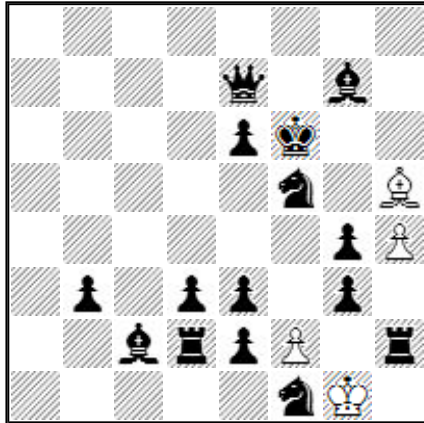
2) 1. Kg5 g4(B) 2. Bg2 f4(A) + 3. Kh6 g5 #

The white thematic half-pin play with reciprocal interchanges between W1 and W2 and model mates.

H # 3 2.1.1.1.1.1. (4 + 12)

Com A. Strebkovs (Latvia)

No 12



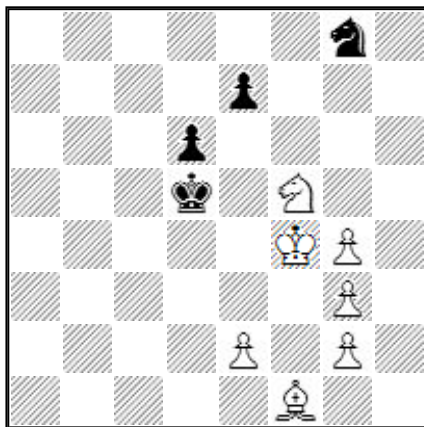
- 1) 1. e1=Q f3 2. Qa1 fg4 3. Qe5 g5 #
 2) 1. e1=S f4 2. Sf3+ Kxf1 3. Sg5 hg5 #

Rather heterogeneous, but interesting play with black promotions and model mates by different white pawns on g5.

H # 3 2.1.1.1.1.1. (4 + 15)

Com D. Muller (Germany)

No 13



1. e6 Sd4 2. Se7 Sb3 3. Sc6 e4 #
 1. e3 Sf6 2. Be2 Se4 3. Bf3 e5 #

Duplex with mutual Umnov and BPe7/WPe2 double-steps.

H # 3 Duplex (7 + 4)

With thanks to all participants, judge of the competition Vitaly Medintsev
 Krasnodar, 6 April 2006